

# Midtown Sacramento Station

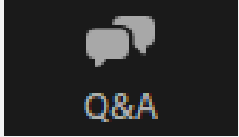
## Project Update: Station Design and Connectivity

---



Community Meeting  
November 15, 2022

# How to Participate



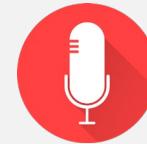
To share questions/comments, please enter by using the **Q&A** button.



To speak during the **Q&A** session, **please raise your hand** and the host will unmute you during an appropriate time. *To allow everyone a chance to speak, please keep your comments concise.*



To improve the quality of your connection, close any applications you don't need during the meeting.



This meeting will be recorded

**You can also email us your questions or comments at any time:**

**[midtownsacramentostation@gmail.com](mailto:midtownsacramentostation@gmail.com)**

# Agenda

- **Opening Remarks / Introductions**
- **Project Background Refresher**
- **Station Overview / Major Changes**
- **Station Design Details and Enhancements**
  - Station Accessway and Platform
  - Plaza Space
- **Station Connectivity / Access**
  - 19<sup>th</sup> Street – Bus, Pick-Up/Drop-Off Areas, and Crosswalks
  - Q Street – Bus, Pick-Up/Drop-Off Areas, and Crosswalks
  - Bicycle and Micromobility
- **Security**
- **Q & A**

# Project Background Refresher



# Valley Rail Program Overview



## Valley Rail Program includes:

- ACE/San Joaquins Extension from Stockton to Natomas via Midtown  
Status: Final Design Phase
- ACE Extension from Lathrop to Ceres  
Status: Final Design Phase
- ACE Extension from Ceres to Merced  
Status: Environmental Clearance Phase

## Funding for Valley Rail Program includes:

- State of California from the Transit and Intercity Rail Capital Program (TIRCP)
- Other State funding sources

**\$500.5 million TIRCP**  
Sacramento Extension

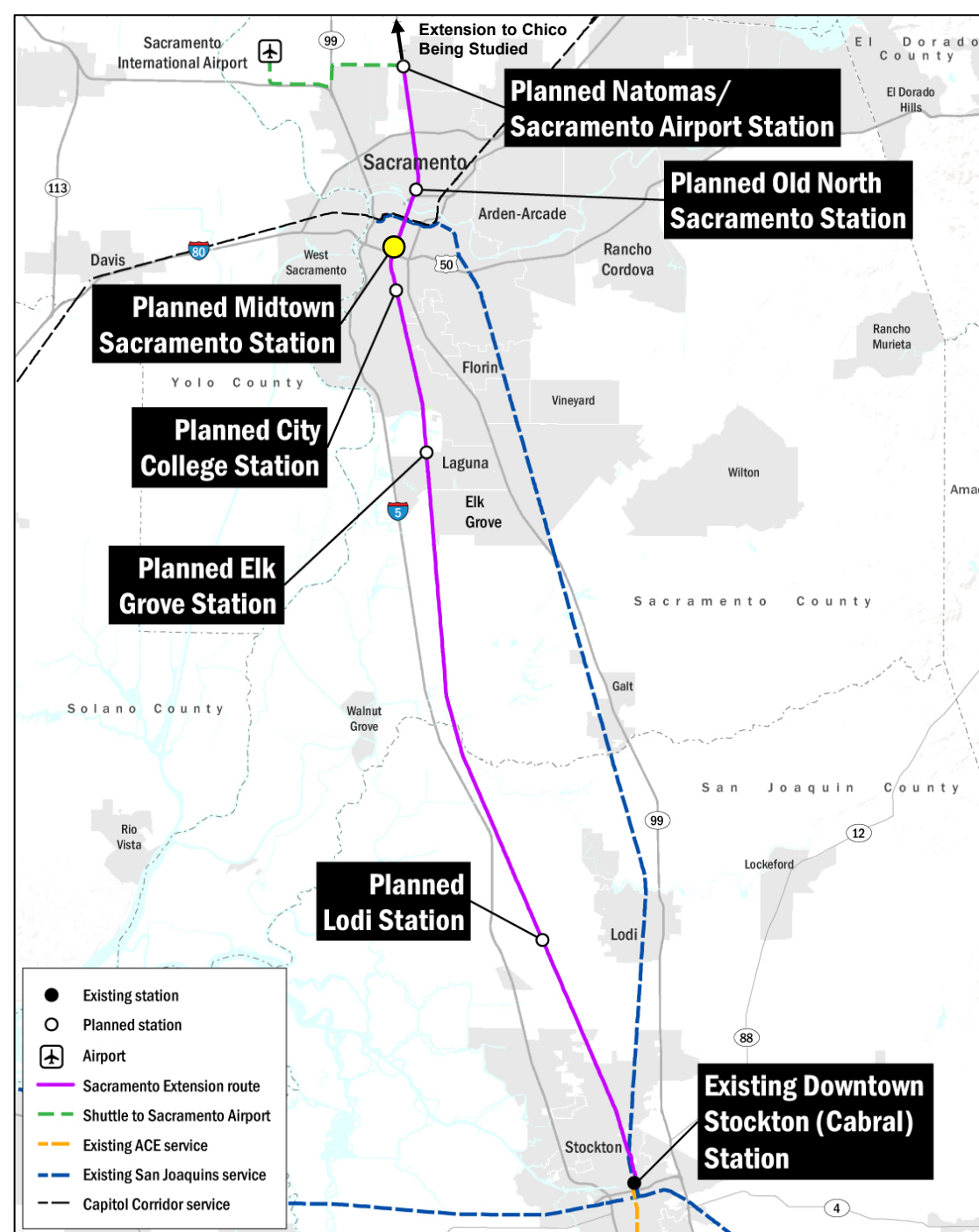
# Valley Rail: Sacramento Extension

## Planned Passenger Rail Service:

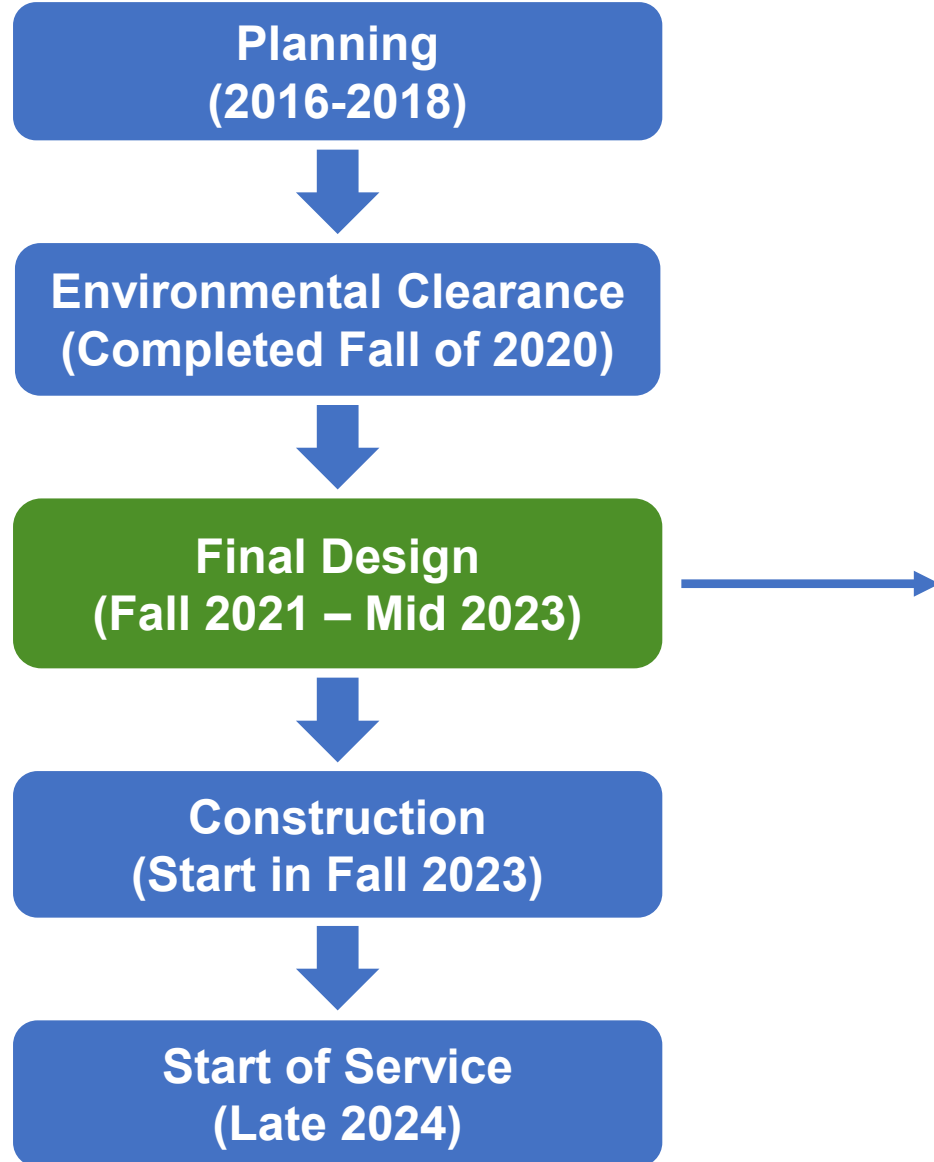
- ACE
  - 1 round trip – late 2024
  - 4 roundtrips by 2025
  - 6 round-trips by 2030
- San Joaquins
  - 2 round-trips by 2027
  - 4 round-trips by 2030

## New Stations:

- Natomas / Sacramento Airport
- Old North Sacramento
- **Midtown Sacramento**
- Sacramento City College
- Elk Grove
- Lodi



# Project Timeline\*



# Engagement / Engineering Timeline

- **Engagement During Planning and Environmental Clearance Phase (2017-2020)**
- **Design Phase Public Meetings (Fall 2021)**
  - Community Meeting #1 – October 27, 2021
  - Various Meetings with Stakeholder Groups
- **Design Concept Development / Station Access Planning (Fall 2021 – November 2022)**
- **Design Phase – Final Public Meetings (Fall 2022)**
  - Community Meeting #2 – November 15, 2022
  - Various Meetings with Stakeholder Groups
- **Detailed Engineering (Mid-2022 – Mid-2023)**
- **Ongoing Stakeholder Coordination**

\*Current Schedule Pending all Approvals, Permits and Supply Chain Availability  
(Schedule Subject to Change)

# Station Overview / Major Changes



# Overview / Major Changes

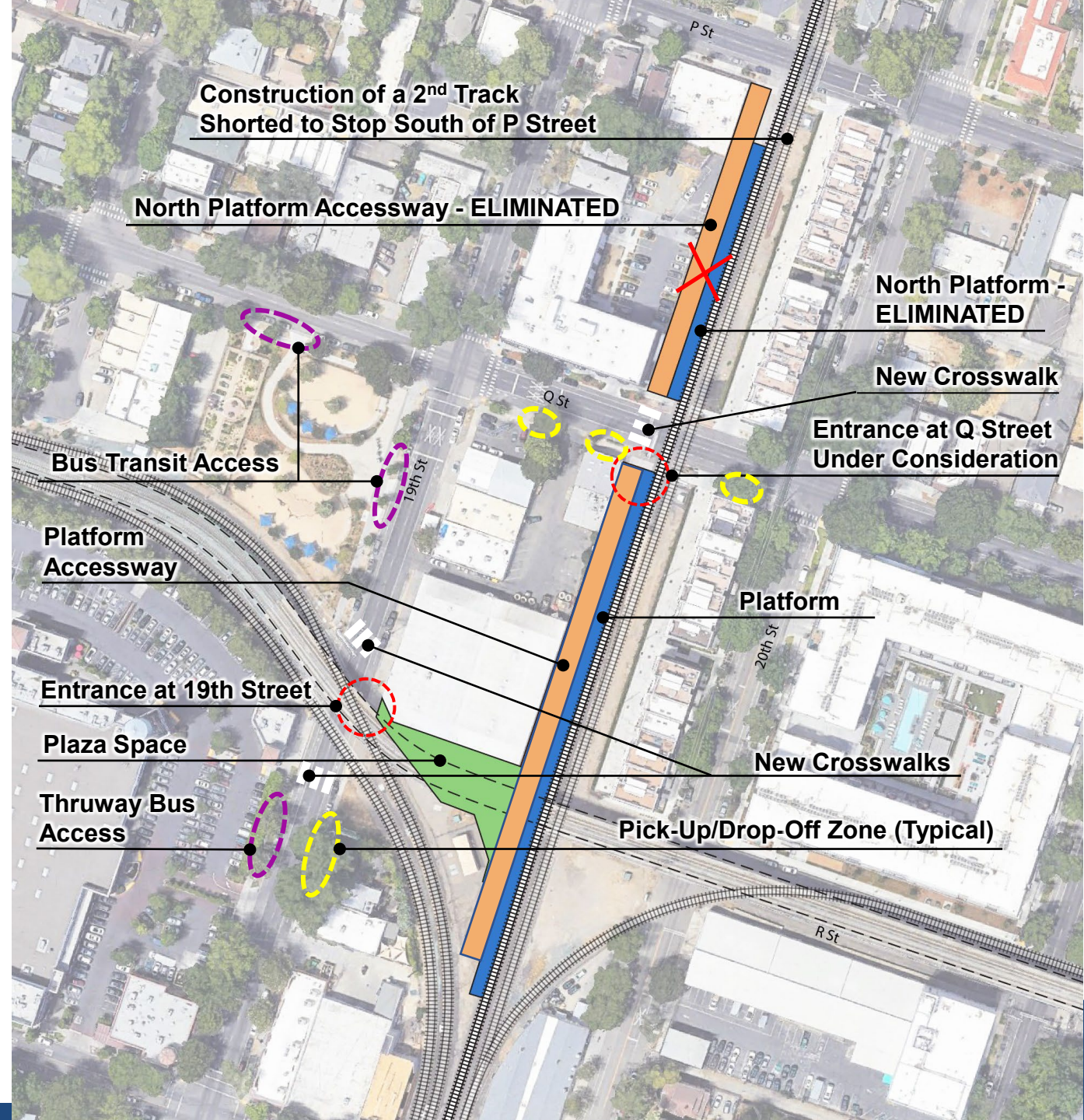
- **Project Overview**

- 19<sup>th</sup> Street primary entrance; new signalized intersection (for mid-block pedestrian crossings)
- Entrance directly off Q Street to platform accessway (pending Union Pacific approval); new signalized intersection (for mid-block pedestrian crossings)
- Side platform - 15' x 565'
- Accessway behind platform
- Plaza space under light rail viaduct
- Space for bus stop and pick-up/drop-off
- Trackwork in coordination with Union Pacific

- **Major Changes**

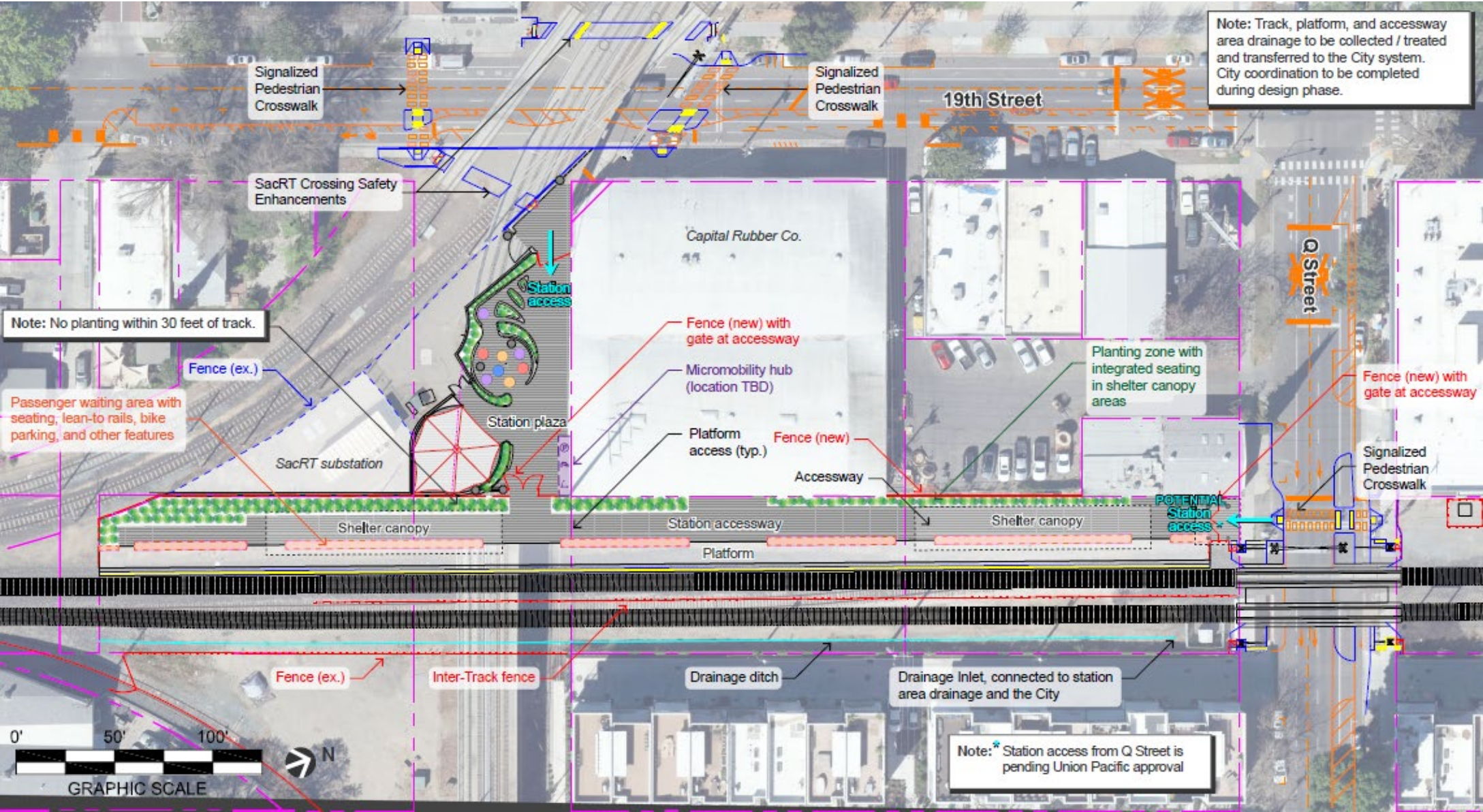
- Elimination of north platform and north platform accessway

Note: Proposed bus changes and pick-up/drop-off zones shown on this map are only proposals at this time and are not final and still be discussed and coordinated with the City of Sacramento, Sacramento Regional Transit District, and other stakeholders.



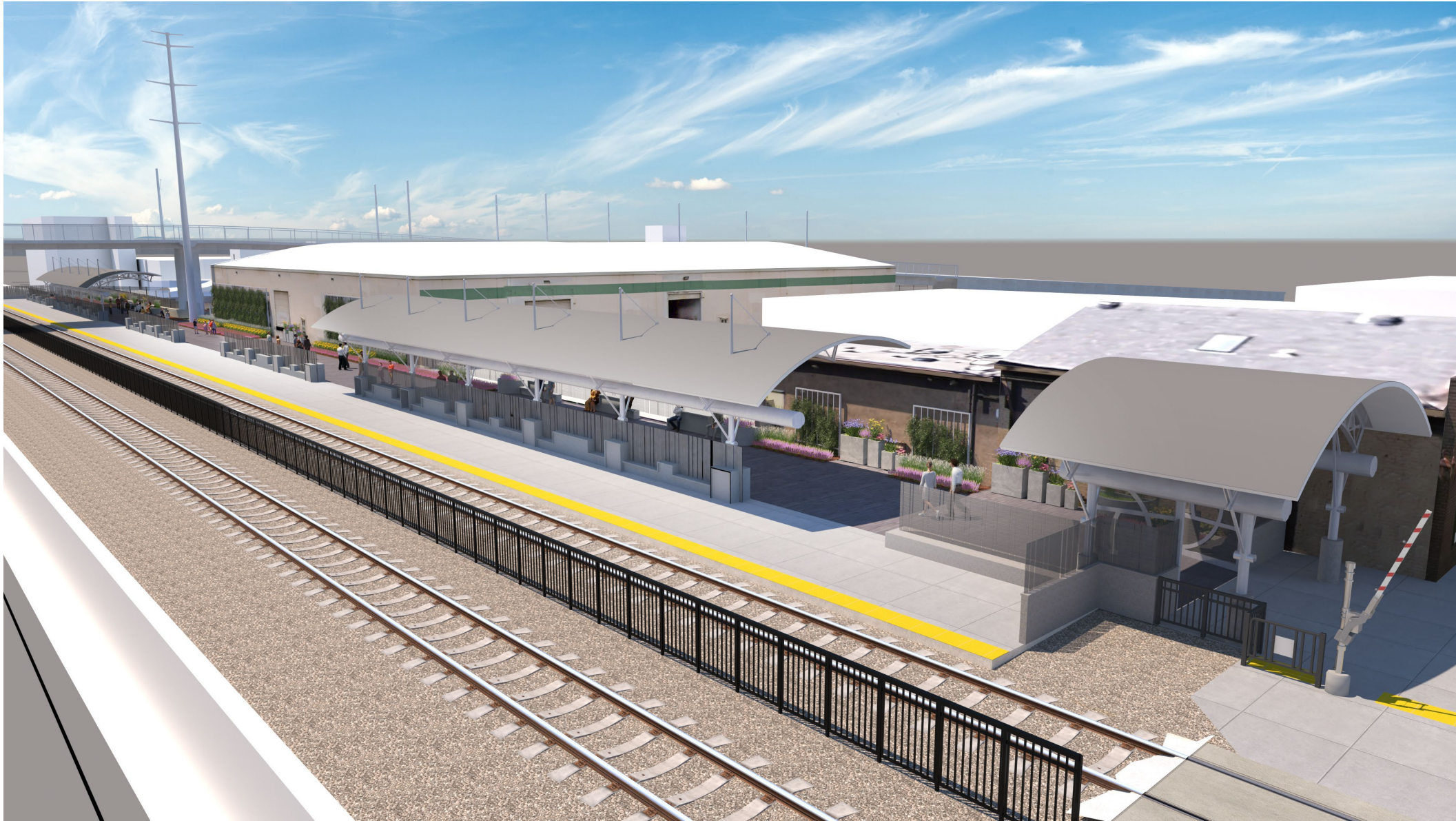


# Station Design – Site Plan





# Overview of Station Design (looking Southwest)





# Program of Project Enhancements

## Total of \$6 Million Set Aside by SJRRC to Fund Station and Connectivity Enhancements

- Funds Set Aside for Station-Related Enhancements – \$3 Million
- Provided Funding for Parking Protected Bikeways on 19<sup>th</sup> and 21<sup>st</sup> Street – \$3 Million





# Station Design Details and Enhancements

# Station Accessway and Platform

## Stations Enhancements: Potential Entrance/Gateway at Q Street

- Note: Entrance pending Union Pacific approval





# Station Accessway and Platform

Stations Enhancements: Station Canopies, Accessway Landscaping, Paving, and Seating



15 Note: Image is intended to illustrate basic design concepts only. Details of the design are subject to change as the final design process proceeds.



# Plaza Space

## Stations Enhancements: Plaza Landscaping, Paving, Seating, and Public Art



Looking East

16 Note: Image is intended to illustrate basic design concepts only. Details of the design are subject to change as the final design process proceeds.



# Plaza Space

## Stations Enhancements: Plaza Landscaping, Paving, Seating, and Public Art



Looking West

17 Note: Image is intended to illustrate basic design concepts only. Details of the design are subject to change as the final design process proceeds.



# Plaza Space

## Food Options





# Plaza Space

## Stations Enhancements: Shaded Gathering Space



19 Note: Image is intended to illustrate basic design concepts only. Details of the design are subject to change as the final design process proceeds.

# Station Connectivity / Access



# 19<sup>th</sup> Street

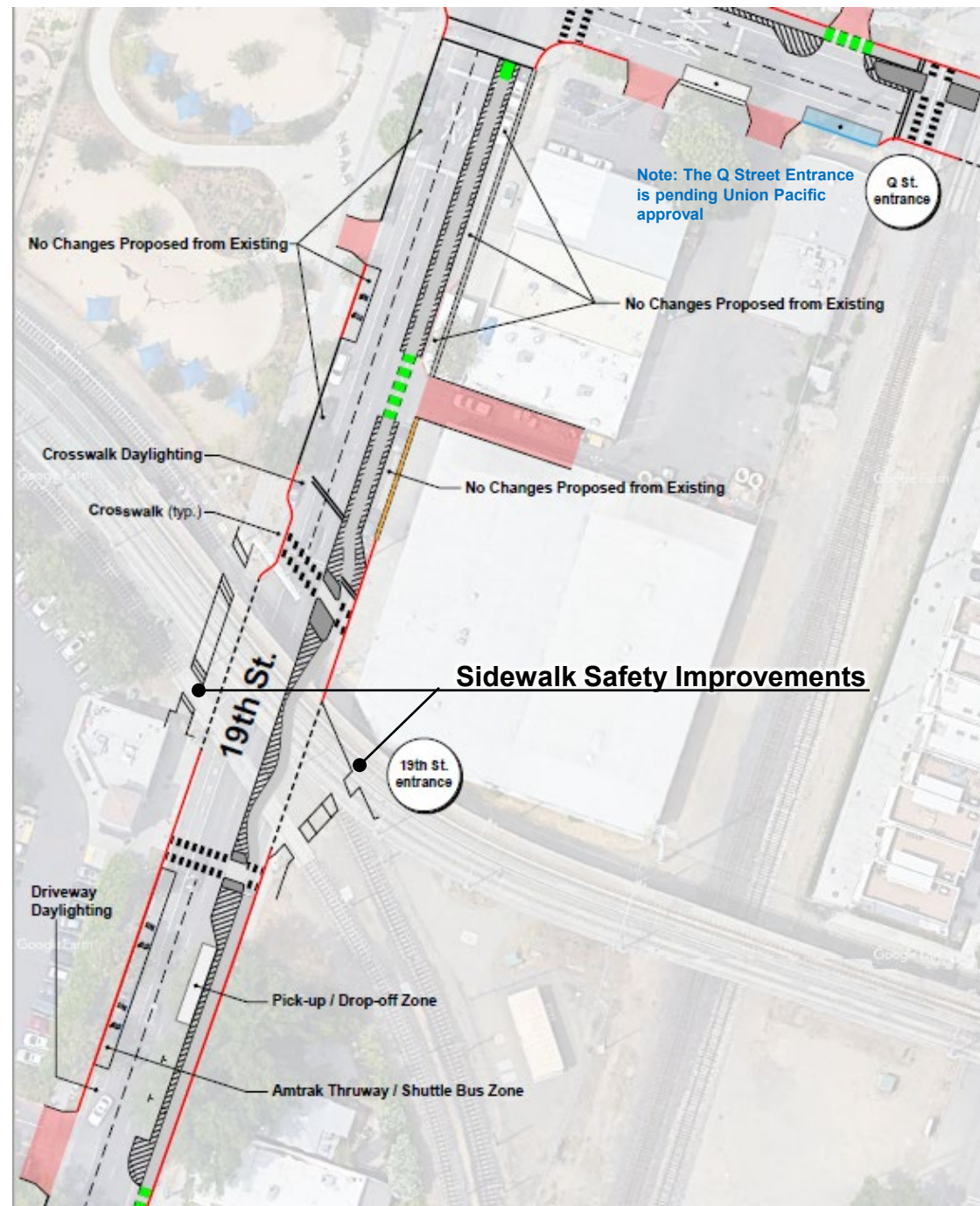
## Pick-Up/Drop-Off Locations

## Bus Stop Concepts

## New Crosswalks

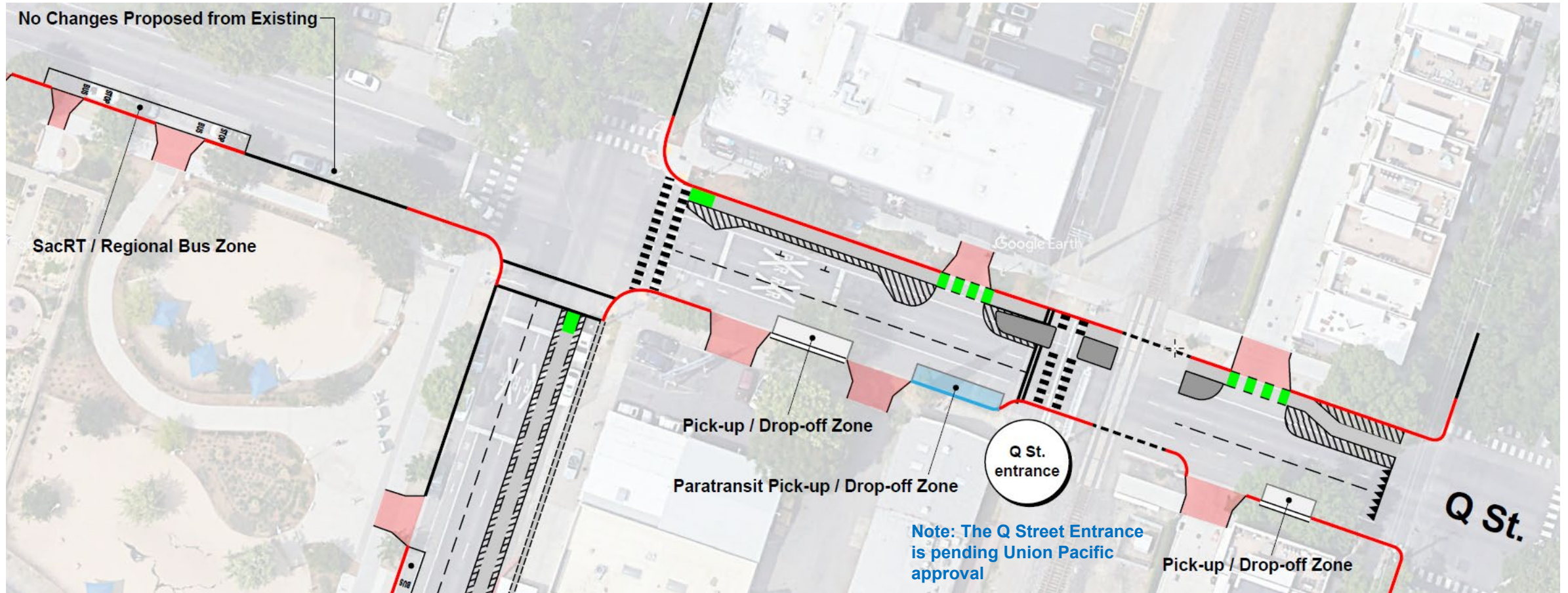
## Sidewalk Improvements

Note: Changes shown on this map are not final, and still be coordinated with the City of Sacramento, Sacramento Regional Transit District, and other stakeholders.



# Q Street

## Pick-Up/Drop-Off Locations, Bus Concepts, New Crosswalks



Note: Changes shown on this map are not final, and still be coordinated with the City of Sacramento, Sacramento Regional Transit District, and other stakeholders.



# Quiet Zone Considerations

- Midtown is in an existing quiet zone encompassing the entire length of the City of Sacramento
- Federal regulations require the sounding of a train horn when construction workers are on site
- Mitigations being undertaken to reduce this temporary impact:
  - Optimize phasing to shorten the overall duration on-site
  - Construction during day hours only (pending Union Pacific approval)
  - Strong public outreach communications during construction





# Q Street

## New Crosswalk with Safety Features





# 19<sup>th</sup> Street

## Entrance/Gateway Feature





# 19<sup>th</sup> Street

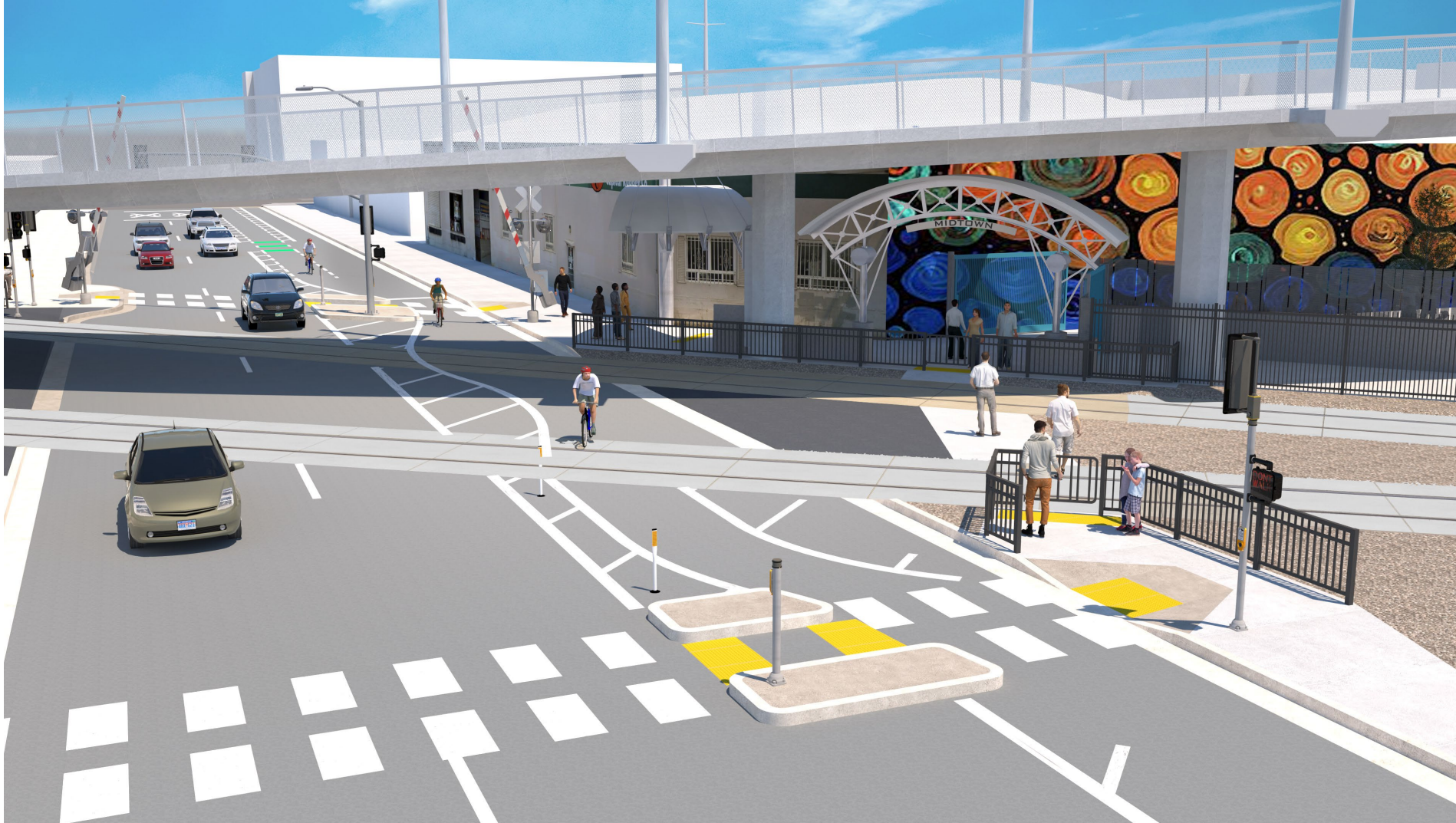
## New Crosswalk on North Side of LRT Tracks





# 19<sup>th</sup> Street

## Re-Aligned Sidewalk through LRT Track (looking from south side of LRT tracks) and Entrance Gateway Feature



27 Note: Image is intended to illustrate basic design concepts only. Details of the design are subject to change as the final design process proceeds.



# Bicycle / Micromobility Access

## Bicycle

- Integration of design with the parking protected bikeways on Q and 19<sup>th</sup> Streets (\$3 million in funding for parking protected bikeway network provided by SJRRC)
- Space for shared-bicycles at planned Micromobility Hub in Plaza Space
- Bicycle lockers to be provided within Plaza Space
- Additional bicycles racks being considered in vicinity of the station
- On-board bicycles for all trains

## Micromobility

- Includes space for shared bicycles/scooters



Note: Image is intended to illustrate basic design concepts only. Details of the design are subject to change as the final design process proceeds.



# Security

# Security

- **Design**

- Lighting
- Rail Operator Security Cameras
- Fencing/Gates
  - Closure of the rail corridor
  - Closure of station area after hours
  - Closure of plaza space after hours

- **Enforcement**

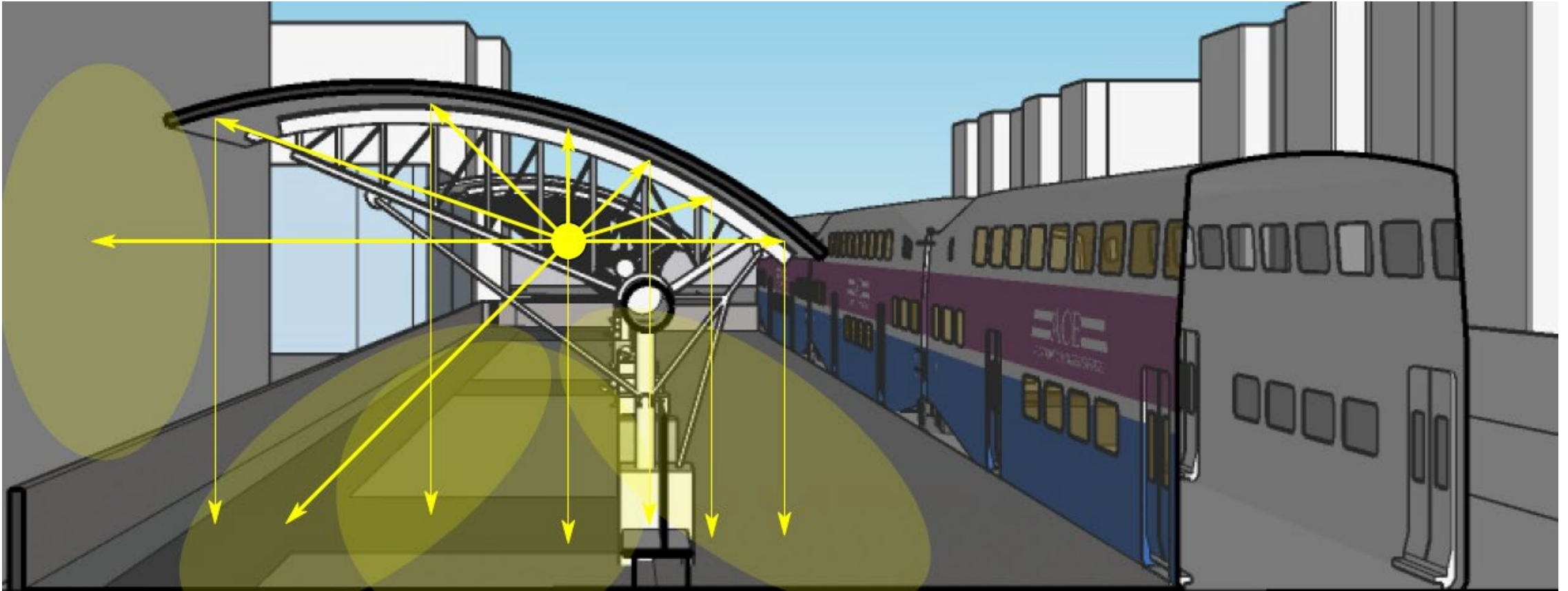
- Work with partners to provide security patrolling of station and plaza space



# Lighting

## Station Canopies and Lighting

- Designed to direct light away from homes



Lighting integrated into the canopies while not being directed toward surrounding area

# Lighting

## 19<sup>th</sup> Street Entrance



32 Note: Image is intended to illustrate basic design concepts only. Details of the design are subject to change as the final design process proceeds.



# Lighting

## Station Accessway and Platform



# Q&A Session

You can contact our team anytime at  
[midtownsacramentostation@gmail.com](mailto:midtownsacramentostation@gmail.com)



Raise Hand

To speak during the **Q&A** session, **please raise your hand** and the host will unmute you during an appropriate time. *To allow everyone a chance to speak, please keep your comments concise.*



Q&A

To share questions/comments, please enter by using the **Q&A** button.